



USER'S INFORMATION MANUAL

GAS BOILERS

FOR MODELS: **MG-50 TO MG-150**
 MS-75 TO MS-150
 SG-135 TO SG-495
 AAE-480 TO AAE-3000

WARNING:

If the information in this manual is not followed exactly, a fire or explosion may result causing property damage, personal injury or loss of life.

- Do not store or use gasoline or other flammable vapors and liquids in the vicinity of this or any other appliance.
- WHAT TO DO IF YOU SMELL GAS
 - Do not try to light any appliance.
 - Do not touch any electrical switch; do not use any phone in your building.
 - Immediately call your gas supplier from a neighbor's phone. Follow the gas supplier's instructions.
 - If you cannot reach your gas supplier, call the fire department.
- Installation and service must be performed by a qualified installer, service agency or the gas supplier.

The installer identified below has ensured that the boiler installed by them complies with the necessary code requirements and is in safe working order.

DATE OF INSTALLATION :

INSTALLED BY :

COMPANY :

ADDRESS :

PHONE :



Manufactured by

Allied Engineering Company

Division of E-Z-Rect Manufacturing Ltd.

Manufacturers of Gas and Electric Boilers, Stainless Steel Tanks, Heat Exchangers and Electric Boosters.
94 Riverside Drive, North Vancouver, B.C. V7H 2M6 • Telephone (604) 929-1214 • FAX (604) 929-5184
Branches: Calgary • Edmonton • Toronto



1 ABOUT OUR MANUALS

Your *Super Hot* boiler has been provided with two manuals:

- *User's Information Manual* - This manual is intended for the **owner or user** of the boiler and provides information on routine operation and maintenance, and emergency shutdown.
- *Installation and Service Manual* - This manual must only be used by a **qualified heating installer, service technician or gas supplier**. Installation or service by anyone unqualified to do so may result in severe personal injury, death or substantial property damage.

Both manuals should be kept in the envelope provided and affixed adjacent to the boiler so that they are readily available for future reference.

2 SAFETY INSTRUCTIONS

WARNING

If you do not follow these instructions exactly, a fire or explosion may result causing property damage, personal injury or loss of life.

- | | |
|---|--|
| <p>A. BEFORE LIGHTING smell all around the boiler area for gas. Be sure to smell next to the floor because some gas is heavier than air and will settle on the floor.</p> <p>WHAT TO DO IF YOU SMELL GAS</p> <ul style="list-style-type: none">• Do not try to light any appliance.• Do not touch any electrical switch; do not use any phone in your building.• Immediately call your gas supplier from a neighbor's phone. Follow the gas supplier's instructions.• If you cannot reach your gas supplier, call the fire department. | <p>B. Use only your hand to push in or turn the gas control knob. Never use tools. If the knob will not push in or turn by hand, don't try to repair it, call a qualified service technician. Force or attempted repair may result in a fire or explosion.</p> <p>C. Do not use this boiler if any part has been under water. Immediately call a qualified service technician to inspect the appliance and to replace any part of the control system and any gas control which has been under water.</p> |
|---|--|

3 LIGHTING INSTRUCTIONS

Your boiler is equipped with one of four optional ignition systems. Determine the ignition system that applies from the list below and go to the applicable lighting instruction section.

- Standing pilot with combination gas valve (*Section 4*)
- Intermittent electronic & hot surface ignition with combination gas valve (*Section 5*)
- Standing pilot with non-combination gas valve (*Section 6*)
- Intermittent electronic ignition with non-combination gas valve (*Section 7*)

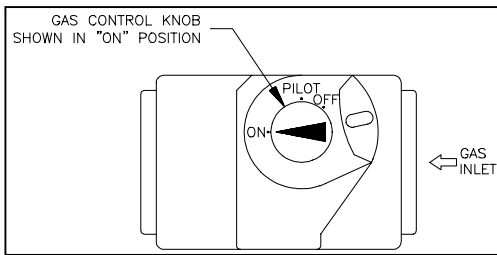
*Note: A **combination gas valve** combines the operating and safety shut-off into one valve body and is typical in residential installations. A **non-combination gas valve** system utilizes separate valve bodies for operating and safety shut-off and is typical in commercial installations.*

If you are unsure which type of gas valve or ignition system your boiler is equipped with, check the lighting instructions sticker on the boiler or contact the factory.



4 LIGHTING INSTRUCTIONS FOR STANDING PILOT WITH COMBINATION GAS VALVE.

- 1 This boiler has a pilot which must be lighted by hand. When lighting the pilot, follow these instructions exactly. Ensure gas supply to boiler is turned on.
- 2 STOP! Read the safety instructions in *Section 2*.
- 3 Set the room thermostat to lowest setting.
- 4 Turn off all electrical power to the boiler.
- 5 Remove control access panel if necessary.
- 6 Push in gas control knob slightly and turn



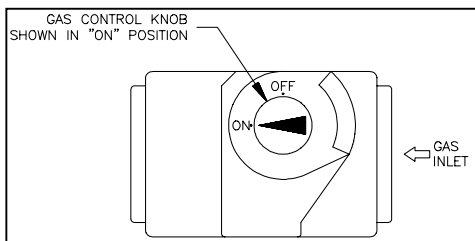
clockwise ↻ to "OFF".

NOTE: Knob cannot be turned from "PILOT" to "OFF" unless knob is pushed in slightly. Do not force.

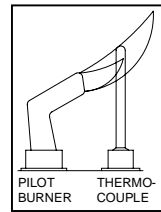
7. Wait five (5) minutes to clear out any gas. Then smell for gas, including near the floor. If you smell gas, STOP! Follow "A" in the safety instructions above. If you don't smell gas, go to step 8.

5 LIGHTING INSTRUCTIONS FOR INTERMITTENT ELECTRONIC & HOT SURFACE IGNITION WITH COMBINATION GAS VALVE.

1. This boiler is equipped with an ignition device which automatically lights the pilot. Do not try to light the pilot by hand. Ensure gas supply to the boiler is turned on.
2. STOP! Read the safety instructions in *Section 2*.
3. Set the room thermostat to lowest setting.
4. Turn off all electrical power to the appliance.
5. Remove control access panel if necessary.
6. Push in gas control knob slightly and turn clockwise ↻ to "OFF".



8. Find pilot burner - follow aluminum tube from gas valve. The pilot is on the far left side of the burner tray.
 9. Depress gas control knob and turn counterclockwise ↻ to "PILOT".
 10. Push in control knob all the way and hold in. Immediately light the pilot with a match. Continue to hold the control knob in for about (1) minute after the pilot is lit. Release knob and it will pop back up. Pilot should remain lit. If it goes out, repeat steps 6 through 10.
 - If the knob does not pop up when released, stop and immediately call your service technician or gas supplier.
 - If the pilot will not stay lit after several tries, turn the gas knob clockwise ↻ to "OFF" and call your service technician or gas supplier.
 11. Turn gas control knob counterclockwise ↻ to "ON".
 12. Replace control access panel if necessary.
 13. Turn on all electrical power to the boiler.
 14. Set room thermostat to desired setting.
- To turn off gas to boiler or emergency shut-off**
Follow *Section 8*.



- NOTE: On some gas valves the knob cannot be turned to "OFF" or "ON" position unless knob is pushed in slightly. Do not force.
7. Wait five (5) minutes to clear out any gas. Then smell for gas, including near the floor. If you smell gas, STOP! Follow "A" in the safety instructions in *Section 2*. If you don't smell gas, go to the next step.
 8. Turn gas control knob counterclockwise ↻ to "ON".
 9. Replace control access panel if necessary.
 10. Turn on all electrical power to the Boiler.
 11. Set room thermostat to desired setting.
 12. If the appliance will not operate, follow the instructions "To Turn Off Gas To Boiler" in *Section 8* and call your service technician or gas supplier.
- To turn off gas to boiler or emergency shut-off**
Follow *Section 8*.



6 LIGHTING INSTRUCTIONS FOR STANDING PILOT WITH NON-COMBINATION GAS VALVE.

The pilot(s) in the boiler can be lit by hand or spark by an electric controller. Before turning on the electrical power switch, be sure all gas supply lines are purged of air and power supply to control is the correct voltage.

If the pilot burner(s) are not lit or a flame safeguard controller is provided and locked-out due to flame failure, close the main and pilot manual gas shut-off valves and call your service technician or gas supplier. If you smell gas, STOP! Follow “A” in the safety instructions in *Section 2*.

To take the control system out of “lockout” (if provided) either press the reset button or interrupt power to the boiler, depending on the boiler controller provided. Some controllers will retry ignition automatically after 5 minutes lockout.

Start System

1. STOP! Read the safety instructions in *Section 2*.
2. Set the thermostat to the lowest setting, close the main and pilot manual gas shut off valves, turn off all electric power to the boiler and wait for five minutes to clear out any gas.
3. Then smell for gas, including near the floor. If you smell gas, STOP! Follow “A” in the safety instructions in *Section 2*. If you don’t smell gas, go to the next step.
4. Find pilot burner – follow metal tube from pilot gas control. The pilot burner(s) is between the two main burners behind the pilot burner inspection door.
5. Turn on the pilot manual gas shut-off valve(s) and hold the button down on the #1 safety pilotstat while lighting #1 pilot burner with a match. Continue to hold the button down for about one minute after the pilot is lit. Release the button, which will pop back up. Pilot should remain lit.
6. If the button does not pop back up when released, stop, turn the pilot manual gas shut off valve(s) off and immediately call your

service technician or gas supplier. If the pilot will not stay lit after several tries, turn the pilot manual gas shut off valve(s) off and call your service technician or gas supplier.

7. If applicable repeat step 5 for EACH succeeding safety pilotstat until all pilots are lit.
8. Turn main manual gas shut off valve(s) to “ON.”
9. Turn on all electrical power to the boiler.
10. Set thermostat to desired setting to put system back in service.

Relight Operation

Five minutes complete shut off period is required before attempting to relight the boiler. To relight the boiler, follow the Start System procedure above.

To turn off gas to boiler or emergency shut-off

Follow *Section 8*.



7 LIGHTING INSTRUCTIONS FOR INTERMITTENT ELECTRONIC IGNITION WITH NON-COMBINATION GAS VALVE.

This boiler is equipped with an ignition device, which automatically lights the pilot. Do not try to light the pilot by hand. Before turning on the electrical power switch, be sure all gas supply lines are purged of air and power supply to control is the correct voltage.

If the pilot or main burners are not lit or the control system is locked-out due to flame failure, close the main and pilot gas shut-off valves and call your service technician or gas supplier. If you smell gas, STOP! Follow “A” in the safety instructions in *Section 2*.

Check Control Operation

1. STOP! Read the safety instructions in *Section 2*.
2. For 100% shut off check, close main and pilot manual gas shut off valves, turn off all electric power to the boiler and wait for five minutes to clear out any gas.
3. Then smell for gas, including near the floor. If you smell gas, STOP! Follow safety instructions in *Section 2*. If you don't smell gas, go to the next step.
4. Set the thermostat above room temperature and turn on all electric power to the boiler to energize the electronic ignition and pilot valve. After a few seconds, the control system should “lockout” and all functions are off.
5. To take the control system out of “lockout” either press the reset button or interrupt power to the boiler, depending on the boiler controller. Some controllers will retry ignition automatically after 5 minutes lockout.

Start System

1. Turn on the main and pilot manual gas shut-off valves.
2. Set thermostat above room temperature and turn on all electrical power to the boiler.
3. Once the pilot flame is proven, the controller opens the main burner gas valves. The pilot flame will ignite the gas as it exits the main burner ports.
4. Set thermostat to the desired setting to put system back in service.

Relight Operation

Five minutes complete shut off period is required before attempting to relight the boiler. To relight the boiler, follow the Start System procedure (above).

To turn off gas to boiler or emergency shut-off

Follow *Section 8*.

8 TO TURN OFF GAS TO THE BOILER OR EMERGENCY SHUT-OFF.

WARNING

Should boiler overheat, or the gas supply fail to shut off, do not turn off or disconnect the electrical supply to the circulating pump. Instead, shut off the gas supply at a location external to the boiler.

1. Set the thermostat to the lowest setting.
2. Turn all electrical power to the boiler off unless boiler is overheating (see "WARNING" above).
3. Remove control access panel on the boiler if necessary.
4. For **combination valve**: Push in gas control knob slightly and turn clockwise ↻ to "OFF". Do not force it.
For **non-combination valve**: Close the main and pilot manual gas shut off valves. The valve is "OFF" when handle is perpendicular to the direction of gas flow.
5. Replace control access panel if necessary.

If the boiler does not operate properly, immediately contact a qualified service agency for adjustment or corrective measures.



9 AREA AROUND BOILER

Keep boiler area clear and free from combustible materials, gasoline and other flammable vapors and liquids.

Do not store anything against the boiler or allow dirt or debris to accumulate in the area immediately surrounding the boiler. It is unsafe for the flow of supply and exhaust air to be obstructed in any way.

Should your boiler be subjected to fire, flood or some other unusual condition, turn off all gas and electrical supply. If you are unable to turn off the gas, call your gas company or gas supplier at once. Do not put the boiler in operation again until it has been ascertained by a qualified agency that the controls are functioning correctly. The installer should always clearly identify the emergency shut-off devices and make the owner aware of their location and method of operation.

WARNING

Do not use this boiler if any part has been under water. Immediately call a qualified service technician to inspect the boiler and to replace any part of the control system and any gas control which has been under water.

10 CHECK FOR GAS LEAKS

To identify gas leaks, smell for gas around boiler area and gas piping connections. To check a specific area for leakage, spray a mixture of soap and water onto the suspected area – active bubbling indicates a gas leak. **DO NOT TEST FOR LEAKS WITH AN OPEN FLAME.**

Propane or liquefied petroleum (LP) is heavier than air may collect or "pool" in a low area in the event of a leak from defective equipment. This gas may then ignite resulting in a fire or explosion. Smell near to the ground and low points when checking for propane gas leaks.

If you smell gas, STOP! Follow "A" in the safety instructions in *Section 2*.

11 CORROSIVE ATMOSPHERES

If a gas boiler is to be installed near a corrosive or potentially corrosive air supply, the boiler should be isolated from it and outside air should be supplied.

Chemical vapors from products containing **chlorine** or **fluorine** must be avoided. Even though these chemicals may be safe to breathe, corrosive substances can become liberated when passed through a gas flame. Even at low concentrations, these chemicals can significantly contaminate the air supply and shorten the life of any gas burning appliance. The following is a list of some of the products which should be avoided:

- bleaches and chlorinated cleaning products
- paints and sprays
- water softeners (calcium or sodium chloride)
- leaking refrigeration equipment
- freon from common aerosol dispensers

These chemicals are especially common near swimming pools, beauty shops, dry cleaning establishments, laundry areas, workshops, and garages. **The warranty is void when failure is due to corrosion.**



12 AIR SUPPLY FOR COMBUSTION AND VENTILATION

A sufficient air supply **MUST** be provided to this boiler. Air openings to the boiler room provide the air for combustion, flue gas dilution and ventilation and are always required, regardless whether the air is taken from inside or outside. The air opening size and location, as well as exhaust venting considerations must conform to the applicable codes. If any alteration of the air supply and venting system is required, contact a qualified service agency.

The boiler room must never be under a negative pressure. Air openings should be sized by your installer not only to the dimensions required for the total input of all fuel-fired appliances in the boiler space, but also to handle the air movement rate of any **exhaust fans** or **air movers** using air from the building or space.

Make sure the venting terminations are always kept clear of obstructions (i.e. snow, ice, etc.). Louvers and grilles used in your air supply and ventilation system should be checked regularly and cleaned of any dust, dirt, or debris which will block proper air flow.

13 CHECK FOR DRAFT HOOD SPILLAGE

WARNING

Continuous spillage at the draft hood relief opening may result in severe personal injury, death or substantial property damage.

After the main burners have operated for 5 minutes, check to see that combustion products are going up the chimney or gas vent properly by passing a lighted match (or smoke from a cigar, cigarette, or pipe) around the edge of the relief opening of the draft hood. If the chimney or gas vent is drawing properly, the match flame or smoke will be drawn into the draft hood. If not, the combustion products will tend to extinguish this flame.

If the combustion products are escaping from the relief opening of the draft hood, **IMMEDIATELY** shutdown the boiler and contact a qualified service agency to make proper adjustments or repairs.

14 BURNER SYSTEM

To maintain safe and efficient operation, examine the burner system regularly through the inspection hole near the pilot tube.

Check condition of burner system

Over time, it is possible for parts of the burners system to become plugged, cracked, eroded and/or dislodged resulting in unsafe operation.

Pilot Flame

The pilot flame should be adjusted to the point where the thermocouple tip or sensor rod is completely enveloped by the flame (Figure 1), but not necessarily glowing red.

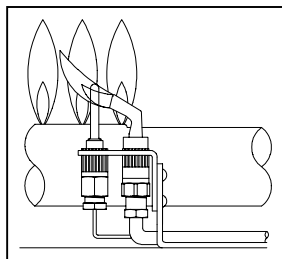


FIGURE 1 - PILOT FLAME ADJUSTMENT

Check for lifting

Flames should not lift excessively from the burner ports. The flames may lift slightly during ignition or when the burners are cold.

Check ignition and extinction

Ignition should flow quickly and smoothly across all the burners. Popping noises or explosions from the burners during ignition, extinction or normal burner operation indicate the need for service.

Check flame color

An extremely yellow flame, as seen on a burning candle or match, is an indication of incomplete combustion and is usually accompanied by the formation of soot and carbon monoxide (carbon monoxide is a lethal, colorless and odorless gas). If soot is allowed to accumulate, it will partially restrict free passage of products of combustion to the flue. Under typically operating conditions, the flame should have a distinct bright blue inner cone and a blue/orange outer cone.

If any of the above problems are observed or the burner system does not operate properly, immediately contact a qualified service agency for adjustment or corrective measures.



15 BOILER WATER

Avoid unnecessary replenishment of system water. It can allow oxygen to enter the system and cause serious corrosion problems. As well, minerals dissolved in the water supply will precipitate when heated; minerals preferentially deposit in the heat exchanger. Do not draw water from the heating system for cleaning, flushing, etc.

Any audible sounds in the boiler system may be indications of scaling or lack of sufficient water flow and the system should be checked without delay. Scaling is due to improper maintenance. It is not the fault of the boiler. Scale damage is not covered by warranty.

In cold weather conditions, take precautionary measures to ensure the system will maintain a minimum return temperature of 138°F. Lower return temperatures will cause condensation on the heat exchanger or in the venting system and reduce draft suction. In addition, low temperatures in the system may result in extensive damage due to freezing if the system should shutdown, possibly due to a safety switch shutdown, for any length of time.

Chemical inhibitors are not recommended as their improper use or maintenance can cause accelerated corrosion, resulting in premature failure of the boiler heat exchanger and/or system.

16 PRESSURE RELIEF VALVE

A pressure relief valve is supplied as standard equipment. The pressure relief valve provides extra protection against damage that could be caused by malfunctioning controls or excessive water pressure. If a pressure relief valve is not used, the warranty is void.

The pressure relief valve must be installed by a qualified installer in accordance with local codes and should not be tampered with in any way. The outlet of the pressure relief valve should be positioned over a suitable drain. The drain pipe must pitch down from the pressure relief valve and should be no smaller than the outlet of the pressure relief valve. The end of the drain line should not be concealed or threaded and should be protected from freezing. No valve of any type should be installed between the pressure relief valve and unit or in the drain line. Extensive runs, traps or bends reduce the capacity of the pressure relief valve. The pressure relief valve is a code requirement.

If discharge occurs during normal operation, call a qualified service agency immediately. Discharge indicates an unsafe pressure condition or a malfunctioning pressure relief valve. Avoid contact with the hot water discharged to prevent personal injury.

17 BLOCKED VENT AND FLAME ROLL-OUT SAFETY SWITCHES

Applicable to all boilers with an input rating less than 300,000 BTU/HR

- This boiler is equipped with a "Blocked Vent" shut-off system. The safety switch will shut down the boiler should the vent or flue become partially or completely blocked. Should this occur do not attempt to re-light the burner. Contact a qualified service technician to ensure it is safe to re-light the boiler.
- This boiler is equipped with a "Flame Roll-out" shut-off system. The safety switch will shut down the boiler should flames roll-out of the combustion chamber. Should this occur do not attempt to re-light the burner. Contact a qualified service technician to ensure it is safe to re-light the boiler.

18 INSPECTION & MAINTENANCE SCHEDULE

This boiler has been designed to provide years of trouble free performance in normal installations. The owner or user should conduct a general external examination covering all items on the "User Checklist" at the **beginning of each heating season** and in **mid-heating season** to assure continued good performance.

In addition, have the boiler inspected by qualified service technician or gas supplier's service person **annually** at the beginning of the heating season for continued safe operation.

Note that some operating conditions may require more frequent inspections.



19 USER CHECKLIST

	<i>Reference Section</i>
○ Check air openings are not restricted and will not be blocked off. Adequate supply air is necessary for combustion, flue gas dilution and ventilation.	12
○ When the boiler has operated for several minutes, check for spillage at draft hood, venting ducts, and other areas susceptible to spillage.	13
○ Check externally the draft hood and vent system for soot, rust scale or corrosion. Check for dislodged venting or possible leaks in venting ducts.	
○ Visually inspect main burners and pilot to ensure proper flame operating characteristics and ignition/extinction is ok.	14
○ Visually check burners to see that they are not cracked or dislodged.	14
○ Check that gas piping is secured. Smell for gas leaks around boiler and gas piping connections. Gas leaks can also be checked for using a soap solution; do not use an open flame to check for leaks. Note: Propane is heavier than air and pools in a low area in the event of a leak.	10
○ Visually inspect for leaks in the water piping and at water piping connections.	
○ Circulating pumps used with hot water heating systems should be inspected for water leaks.	
○ Check for weeping at pressure relief valve outlet during normal operation.	16
○ Listen for unusual audible sounds in the boiler.	15
○ Read temperature and pressure gauge. Check with qualified installer or service agency to determine acceptable temperature and pressure range for your heating system.	
○ Combustible materials, gasoline and other flammable vapors and liquids should not be stored in the area of the boiler.	9

If any problems are identified during your inspection, contact a qualified service agency for corrective measures.

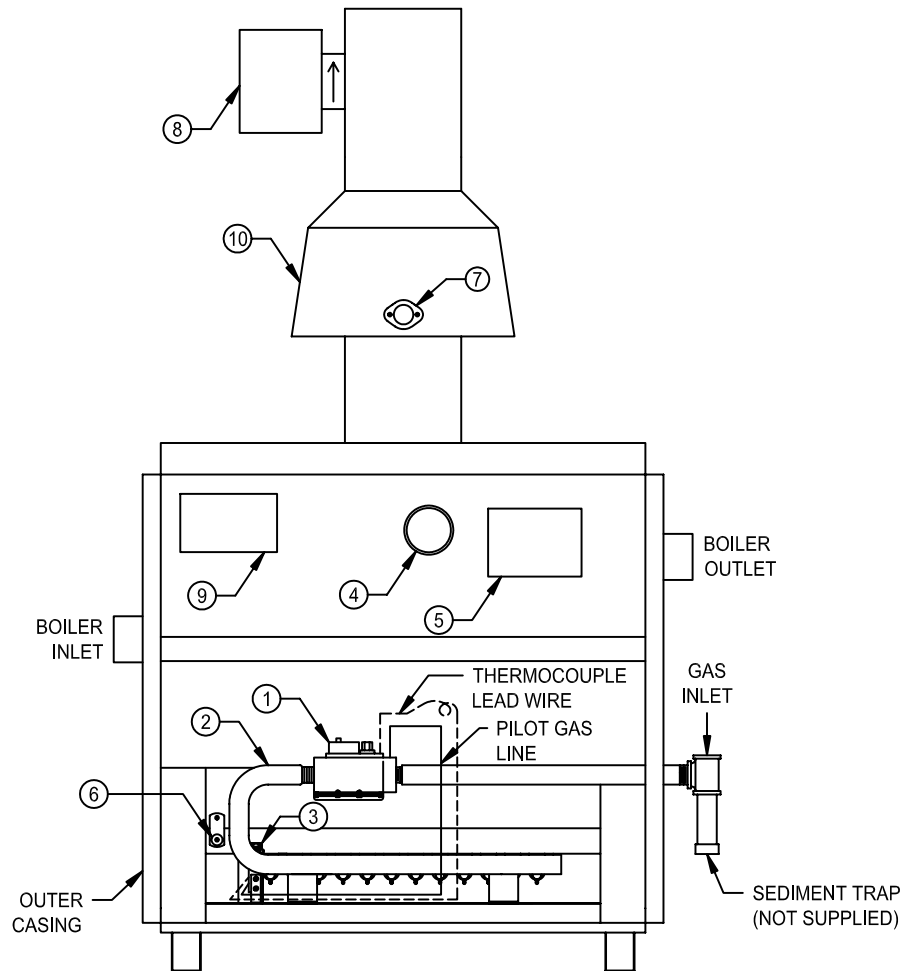
Once every year at the beginning of the heating season:

- Have a qualified service technician remove the draft hood from the boiler and inspect the flueways for the presence of soot or rust scale. The draft hood and smoke pipe connecting the draft hood to the flue must be inspected for rust or corrosion before replacing the draft hood. The presence of soot, rust scale or corrosion indicates misadjustment.
- Have a qualified service technician inspect the pilot burner and main burner.
- The qualified service technician should follow the "Maintenance Checklist" and other applicable safety information found in the *Installation and Service Manual*.



20 TYPICAL RESIDENTIAL BOILER COMPONENT LOCATIONS

ITEM	DESCRIPTION
1	COMBINATION GAS VALVE
2	MANIFOLD ASSEMBLY
3	PILOT BURNER UNIT
4	TEMPERATURE / PRESSURE GAUGE
5	DUAL SAFETY HIGH-LIMIT AQUASTAT
6	FLAME ROLL-OUT SAFETY SWITCH
7	BLOCKED VENT SAFETY SWITCH
8	AUTOMATIC VENT DAMPER
9	ZONE CONTROL BOARD
10	DRAFT HOOD



MG-U-033-04

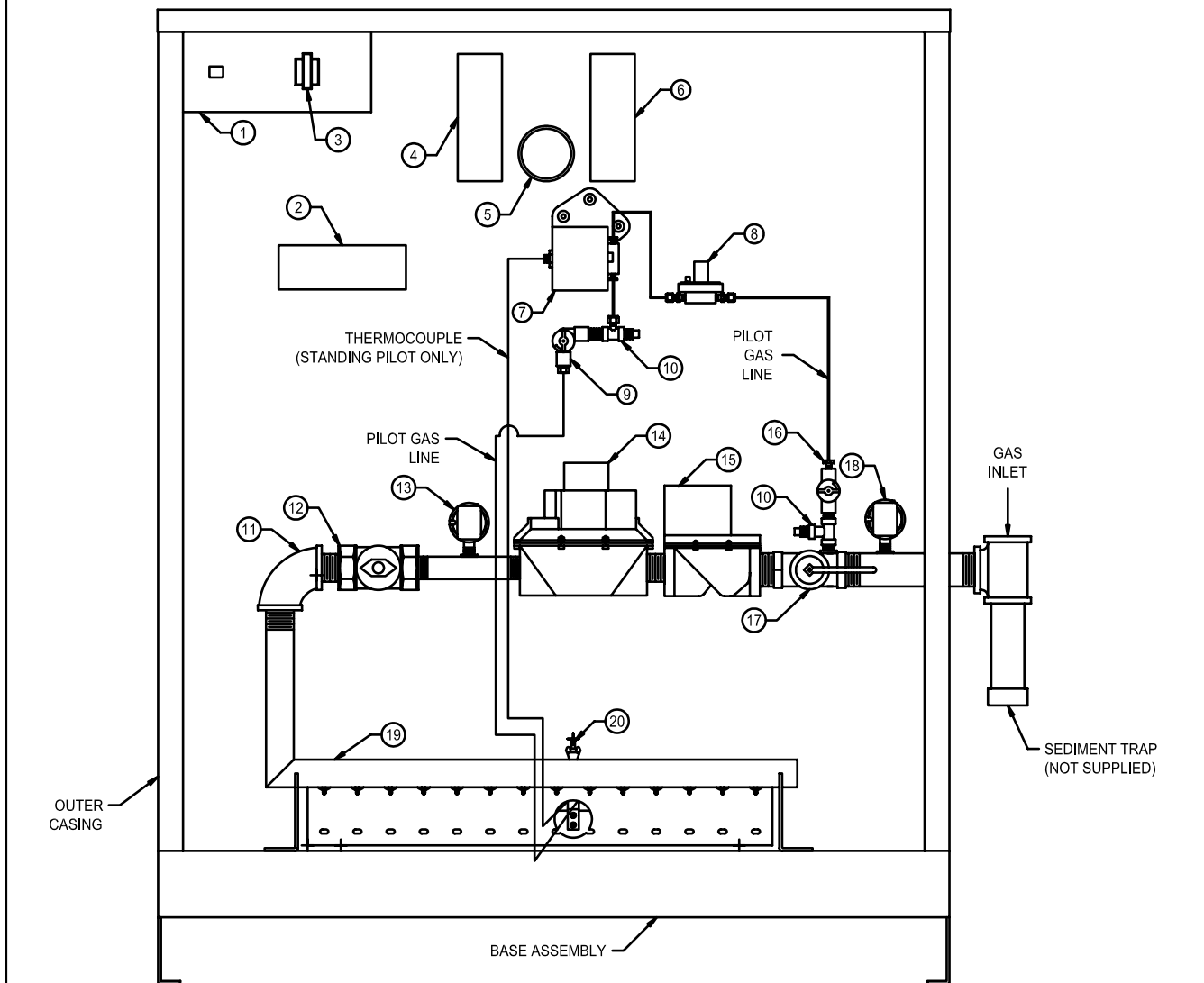
FIGURE 2 - TYPICAL GAS TRAIN ASSEMBLY AND CONTROL COMPONENT LAYOUT FOR RESIDENTIAL INSTALLATIONS



21 TYPICAL COMMERCIAL BOILER COMPONENT LOCATIONS

ITEM	DESCRIPTION	ITEM	DESCRIPTION
1	MAIN ON/OFF SWITCH PANEL	11	90° ELBOW
2	IGNITION CONTROL MODULE (ELECTRONIC IGNITION ONLY)	12	MANUAL SHUT-OFF VALVE (FIRING VALVE)
3	TRANSFORMER	13 † ‡	HIGH GAS PRESSURE SWITCH (WHEN USED)
4	OPERATING / HIGH LIMIT AQUASTAT	14	MAIN GAS VALVE
5	TEMPERATURE / PRESSURE GAUGE	15	REDUNDANT GAS VALVE
6	SAFETY HIGH LIMIT AQUASTAT	16	P2S PILOT SHUT-OFF VALVE
7	PILOTSTAT OR PILOT SOLENOID VALVE	17	MANUAL MAIN SHUT-OFF VALVE (AB COCK)
8	PILOT REGULATOR	18 ‡	LOW GAS PRESSURE SWITCH (WHEN USED)
9	P2R PILOT SHUT-OFF VALVE (FOR MULTIPLE PILOTS ONLY)	19	MANIFOLD ASSEMBLY
10	1/4" TEE & PLUG	20	PILOT BURNER UNIT

† ITEM 13 IS REQUIRED ON BOILERS WITH AN INPUT OVER 2500 M.B.H.
 ‡ ITEM 13 & 18 ARE REQUIRED ON U.S. BOILERS (CSD-1) WITH AN INPUT OVER 2500 M.B.H.



NOTES:
 1. SOME MODELS MAY BE SUPPLIED WITH A COMBINATION GAS VALVE.
 2. SOME MODELS MAY BE SUPPLIED WITH A DUAL OPERATING / SAFETY HIGH LIMIT AQUASTAT.
 3. ITEMS SHOWN MAY NOT BE PRESENT ON ALL MODELS.

AAE-U-021-05

FIGURE 2 - TYPICAL GAS TRAIN ASSEMBLY AND CONTROL COMPONENT LAYOUT FOR COMMERCIAL INSTALLATIONS



22 INDEX

Section	Page
1 About Our Manual	2
2 Safety Instructions	2
3 Lighting Instructions.....	2
4 Lighting Instructions for Standing Pilot with Combination Gas Valve	3
5 Lighting Instructions for Intermittent Electronic & Hot Surface Ignition with Combination Gas Valve ...	3
6 Lighting Instructions for Standing Pilot with Non-Combination Gas Valve.....	4
7 Lighting Instructions for Intermittent Electronic with Combination Gas Valve.....	5
8 To Turn off Gas to the Boiler or Emergency Shut-Off	5
9 Area around Boiler.....	6
10 Check for Gas Leaks	6
11 Corrosive Atmospheres	6
12 Air Supply for Combustion and Ventilation.....	7
13 Check for Draft Hood Spillage	7
14 Burner System	7
15 Boiler Water	8
16 Pressure Relief Valve	8
17 Blocked Vent and Flame Roll-Out Safety Switches	8
18 Inspection & Maintenance Schedule	8
19 User Checklist	9
20 Typical Residential Boiler Component Locations.....	10
21 Typical Commercial Boiler Component Locations	11
22 Index	12